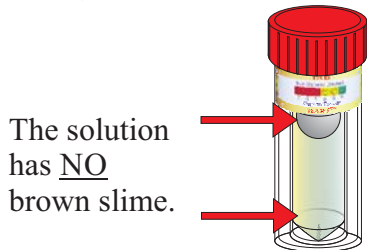


BART™ TEST FOR IRB IRON RELATED BACTERIA

Present/Absent - observe daily for 8 days.

ABSENT
(Negative - Non-aggressive)



The solution has NO brown slime.

PRESENT
(Positive - Aggressive)



A **Brown** slime ring or foam around the ball,
and/or

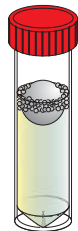
A **Brown** slime growth at the base of tube.

1. View test each day for 8 days.
2. Observe any growths/color changes.
3. Compare with descriptions.

*Note: Refer to page bottom for approximate population

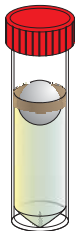
Advanced test information.

Determination of Dominant Bacteria



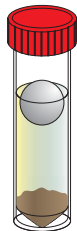
FO

FOAM(FO)
around ball
- Anaerobic
Bacteria.

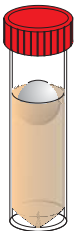


BR

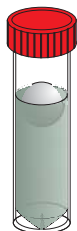
BROWN RINGS(BR), GEL(BG), and/or CLOUDS(BC)
- IRB.



BG

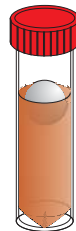


BC



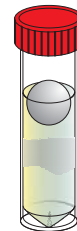
GC

Solution **GREEN-CLOUDY(GC)**
- Pseudomonads.



RC

Solution **RED-CLOUDY(RC)**
- Enteric Bacteria.



CL

Solution **CLOUDY(CL)**
- Heterotrophic
Bacteria.



BL

Solution **BLACK(BL)**
- Pseudomonads
and Enterics.

Determination of Potential IRB Population - observe daily for reaction.

Days to reaction - Approximate IRB Population (cfu/mL)



1 - 570,000
2 - 140,000
3 - 35,000
4 - 9000

Aggressive



5 - 2200
6 - 500
7 - 150
8 - 25

Moderate



9 - 8
10 - <1

Not Aggressive

